

3

FILTER.
REGULATOR.
LUBRICATOR



Air Source Treatment Unit Tips

AIRNEO always controls very strictly all the details, from mould making to die-casting technique, from high precision machining to orderly assembling, from intelligent test control to quality control.....

How to Use and Maintain

1. Before use, check the unit to see if there is some damage during the transportation, or if the joint connection is loose. If everything is ok, then start to use.
2. When installing, please pay attention to the direction of airflow and keep the unit upright.
3. When the inlet and outlet are in reduced connection, the airflow rate will be reduced approx by 10%. If with higher rate of precision, the airflow rate will be reduced approx by 7%.
4. For units with bowl guards, make sure to fix them before use.
5. When use the regulator or filter and regulator. Firstly, we need to adjust the hand wheel to the zero position. Fix the pressure gauge and plugs on the right positions, and ensure they will not leakage. (Positions of the pressure gauge and plug can be exchanged). Then compressed air in and adjust the air to a proper pressure.
6. When using the lubricator, we need to adjust the oil valve needle to the zero position and add oil to the oil level line first. Then adjust to a proper position when compressed air in. Pay attention to the brand and grade of the lubricating oil. Never use spindle oil and lubricating oil containing lower ketone or aromatic hydrocarbon.
7. When using metal tubes for connection, remember to remove the metal grains, dusts and oil stains in the tubes.
8. Please attention whether the working condition meet the technical details of the units. (Such as the working pressure, working temperature)
9. Please change the filter element when filter's function not goes well.
10. When remove the units from the system. Please pay attention to protect the units by the dust plug on the threads.

How to Order

1. Please let us know the item No, order number, specifications and quantity when placing an order.
2. For orders of filter, regulator and regulator+filter etc., please specify the filter precision and pressure range. Otherwise, we will provide the our normal standard products to you.
3. For special requirements, you can contact us by e-mail, fax and so on, We can discuss together and arrange specially.

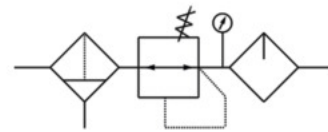
O Series Air Treatment Units

Ordering Code

OU Series F.R.L. Combination

AOU	1/4	<input type="checkbox"/>	<input type="checkbox"/>	MINI	<input type="checkbox"/>
Filter+Regulator + Lubricator	Port Size: G1/8" G1/2" G1/4" G3/4" G3/8" G1"	Precision Blank: 25µm 5M: 5µm	Pressure Gauge Blank: 12bar 7: 7bar	MINI: Body width 40mm MIDI: Body width 55mm MAXI: Body width 66mm	Condensate Drain Blank: Turned Manually S: Semi-automatic A: Fully automatic

Specifications



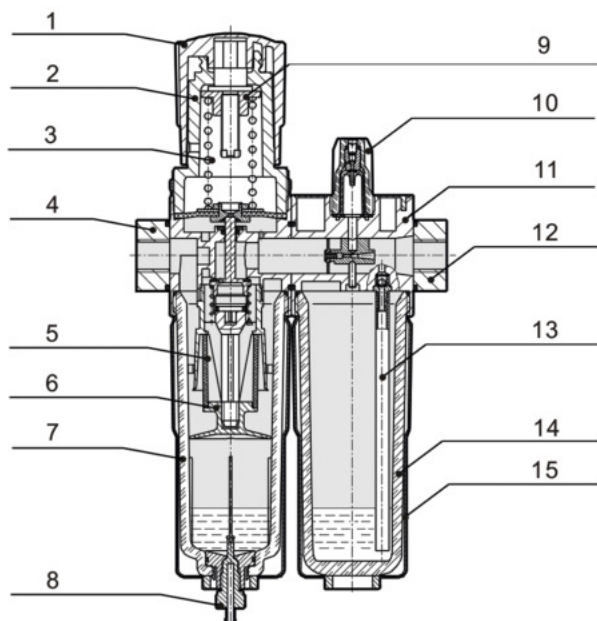
Specifications		MINI			MIDI			MAXI	
Port Size		G1/8"	G1/4"	G3/8"	G3/8"	G1/2"	G3/4"	G3/4"	G1"
Materials Information		Housing : Zinc die-casting ; Filter bowl and oil : Polycarbonate Metal bowl guard : Aluminium alloy ; Sealing : NBR ; Adjusting knob : POM							
Working Medium		Compressed air							
Mounting Type		Pipe mounting or foot mounting							
Assembly Position		Vertical ± 5°							
Min. Standard Nominal Flow Rate		3L/ min			6L/ min			10L/ min	
Capacity of Condensate Fluid		22ml			43ml			80ml	
Primary Pressure	Turned Manually	0.1~1.6MPa							
	Fully automatic	0.15~1.2MPa							
Working Pressure		0.05~1.2MPa/ 0.05~0.7MPa							
Precision		40µm/5µm							
Working Temperature Range		0~60°C							

O Series Air Treatment Units

Standard Rated Flow

Joint Size		G1/ 8"	G1/ 4"	G3/ 8"	G3/ 8"	G1/ 2"	G3/ 4"	G3/ 4"	G1"
MINI	AOU-...(- A)	700	1000	1200			-	-	-
	AOU-...- 5M-...(- A)	800	1300	1500	-	-	-	-	-
	AOU-...- 7(- A)				-	-	-		
MIDI	AOU-...(- A)	-	-	-	2000	2600	2600	-	-
	AOU-...- 5M-...(- A)	-	-	-	2000	2800	2800	-	-
	AOU-...- 7(- A)	-	-	-	1700	1800	2100	-	-
MAXI	AOU-...(- A)	-	-	-	-	-	-	3800	4800
	AOU-...- 5M-...(- A)	-	-	-	-	-	-	5000	5200
	AOU-...- 7(- A)	-	-	-	-	-	-	3600	3800

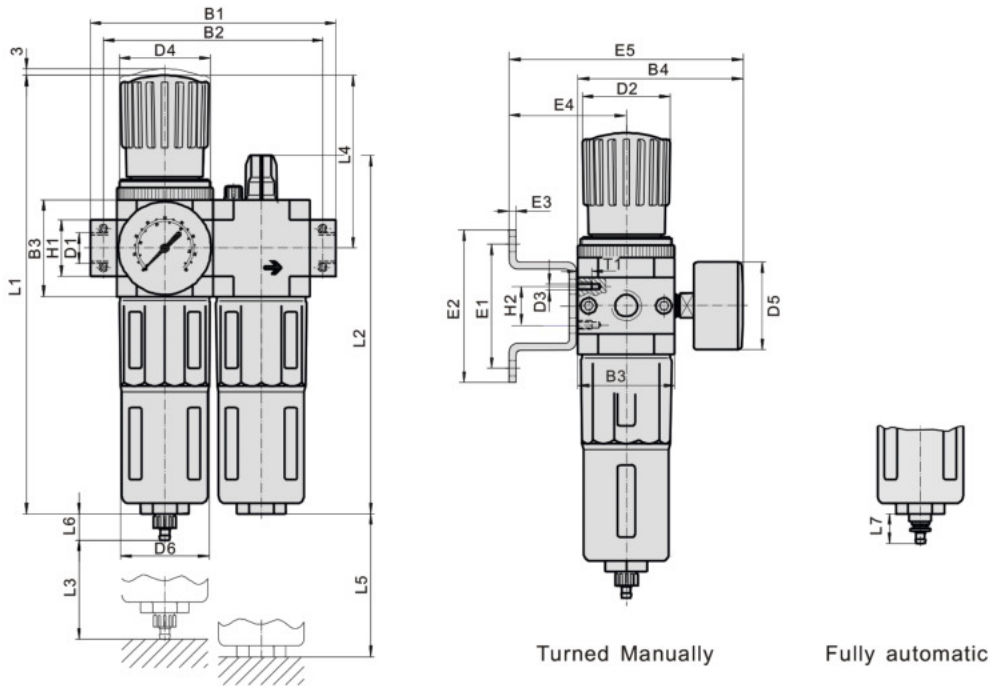
Internal Structure



NO.	Item	Material
1.	Pressure knob	POM
2.	Regulator cap	POM
3.	Pressure spring	SWC
4.	Flange- IN	Zinc alloy
5.	Filter element	Brass
6.	Manger	POM
7.	Metal bowl guard	Aluminium alloy
8.	Condensate drain	POM
9.	Adjusting spindle	S35C
10.	Upper glass	PC
11.	OL body	Zinc alloy
12.	Flange- OUT	Zinc alloy
13.	Oil tube	PU
14.	Lubricator bowl	PC
15.	Metal bowl guard	Aluminium alloy
16.	O- Ring	NBR

O Series Air Treatment Units

Main Dimensions



Model	B1	B2	B3	B4	D1	D2	D3	D4	D5	D6	L	1	L2	L3	L4	L5	L6	L7	H1	H2	E1	E2	E3	E4	E5
AOU- MINI- 1/ 8"	104	92	40	76	G1/8"	40	M6	M36*1.5	Ø40	Ø38	19	3	169	60	69	100	15	19	20	11	35	44	2	39	95
AOU- MINI- 1/ 4"	104	92	40	76	G1/4"	40		M36*1.5			19	3	169	60	69	100	15	19	20	11	35	44	2	39	95
AOU- MINI- 3/ 8"	104	92	40	76	G3/8"	40	M6	M36*1.5	Ø40	Ø38	19	3	169	60	69	100	15	19	20	11	35	44	2	39	95
AOU- MIDI- 3/ 8"	140	125	55	93	G1/8"	55		M52*1.5			25	0	206	80	97	120	15	19	32	22	60	71	3	47	112
AOU- MIDI- 1/ 2"	140	125	55	92	G1/2"	55	M5	M52*1.5	Ø52	Ø52	25	0	206	80	97	120	15	19	32	22	60	71	3	47	112
AOU- MIDI- 3/ 4"	140	125	55	92	G3/4"	55		M52*1.5			25	0	206	80	97	120	15	19	32	22	60	71	3	47	112
AOU- MAXI- 3/ 4"	162	146	66	104	G3/4"	66	M5	M36*1.5	Ø63	Ø65	25	2	223	90	80	150	15	19	32	22	60	71	3	52	123
AOU- MAXI- 1"	182	157	66	104	G1"	66		M36*1.5			25	2	223	90	80	150	15	19	32	22	60	71	3	52	123

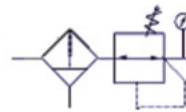
O Series Air Treatment Units

Ordering Code

OFR Series F.R. Combination

AOFR	-	1/4	<input type="checkbox"/>	<input type="checkbox"/>	MINI	<input type="checkbox"/>
Filter+Regulator		Port Size:	Precision	Pressure Gauge	MINI: Body width 40mm MIDI: Body width 55mm MAXI: Body width 66mm	Condensate Drain
		G1/8" G1/2" G1/4" G3/4" G3/8" G1"	Blank: 40µm 5M: 5µm	Blank: 0.5- 12bar 7: 0.5- 7bar		Blank: Turned Manually S: Semi-automatic A: Fully automatic

Specifications



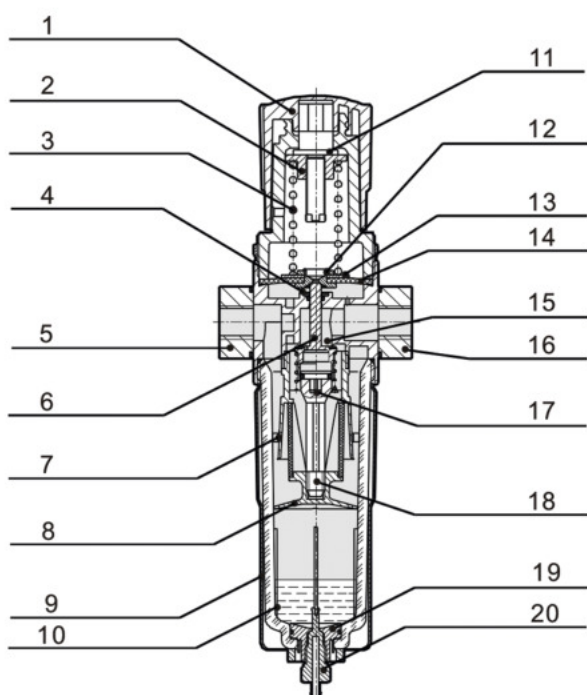
Specifications		MINI			MIDI			MAXI	
Port Size		G1/8"	G1/4"	G3/8"	G3/8"	G1/2"	G3/4"	G3/4"	G1"
Materials Information		Housing : Zinc die- casting ; Filter bowl and oil : PC ; Metal bowl guard : Aluminium alloy ; Sealing : NBR ; Adjusting knob : POM							
Working Medium		Compressed air							
Mounting Type		Pipe mounting or foot mounting							
Assembly Position		Vertical ± 5°							
Features of Structure		Sintered filter with water separator ; MINI/ MIDI: Diaphragm type regulator ; MAXI: Piston regulator; Direct constant- density lubricator.							
Primary Pressure	Turned Manually	0.1~1.6MPa							
	Fully automatic	0.15~1.2MPa							
Working Pressure		0.05~1.2MPa/ 0.05~0.7MPa							
Precision		40µm/5µm							
Capacity of Condensate Fluid		22ml			43ml			80ml	

O Series Air Treatment Units

Standard Rated Flow

Joint Size		G1/ 8"	G1/ 4"	G3/ 8"	G3/ 8"	G1/ 2"	G3/ 4"	G3/ 4"	G1"
MINI	AOFR-...- D-	750	1400	1600			-	-	-
	AOFR-...- D- 7-...	900	1500	1700	-	-	-	-	-
	AOFR-...- D- 5M-...				-	-	-		
MIDI	AOFR-...- D-	-	-	-	3100	3400	3400	-	-
	AOFR-...- D- 7-...	-	-	-	3200	3900	4000	-	-
	AOFR-...- D- 5M-...	-	-	-	2400	2600	2600	-	-
MAXI	AOFR-...- D-	-	-	-	-	-	-	9700	10000
	AOFR-...- D- 7-...	-	-	-	-	-	-	10000	11000
	AOFR-...- D- 5M-...	-	-	-	-	-	-	7600	8000

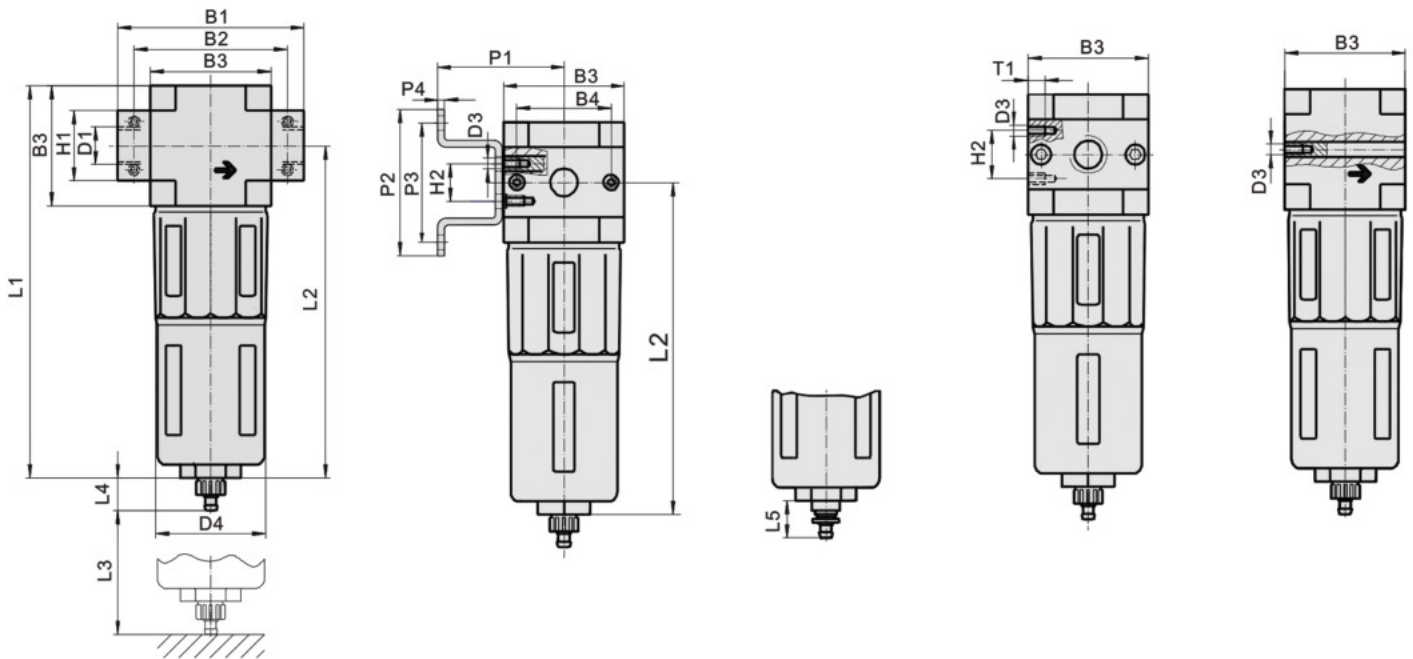
O Series Air Treatment Units



NO.	Item	Material
1.	Pressure knob	POM
2.	Regulator nut	S35C
3.	Pressure spring	SWC
4.	One part of membrane	PA6+G15
5.	Flange- IN	Zinc alloy
6.	Spool	Brass
7.	Filter element	PE
8.	Manger	POM
9.	Metal bowl guard	Aluminium alloy
10.	Filter bowl	PC
11.	Wearing sheet	Insulation sheet
12.	Sheet	NBR
13.	One part of diaphragm	SPCC
14.	Diaphragm	NBR+Nylon
15.	OR Body	Zinc alloy
16.	Flange- OUT	Zinc alloy
17.	Fasteners	Brass
18.	Filter element base	POM
19.	Inner joint	POM
20.	Condensate drain	POM
21.	O- ring	NBR

O Series Air Treatment Units

Main Dimensions



Turned Manually



Fully automatic

Model	B1	B2	B3	B4	D1	D2	D3	D4	D5	D6	L	L2	L3	L4	L5	H1	H2	E1	E2	E3	E4	E5
OFR-MINI-1/8"	64	52	40	76	G1/8"	Φ31	M4	M36*1.5	Φ40	Φ38	193	60	69	15	19	20	11	35	44	2	39	95
OFR-MINI-1/4"	64	52	40	76	G1/4"	Φ31		M36*1.5			193	60	69	15	19	20	11	35	44	2	39	95
OFR-MINI-3/8"	64	52	40	76	G3/8"	Φ31	M4	M36*1.5	Φ40	Φ38	193	60	69	15	19	20	11	35	44	2	39	95
OFR-MIDI-3/8"	85	70	55	93	G1/8"	Φ50		M52*1.5			250	80	97	15	19	32	22	60	71	3	47	112
OFR-MIDI-1/2"	85	70	55	93	G1/2"	Φ50	M5	M52*1.5	Φ52	Φ52	250	80	97	15	19	32	22	60	71	3	47	112
OFR-MIDI-3/4"	85	70	55	93	G3/4"	Φ50		M52*1.5			250	80	97	15	19	32	22	60	71	3	47	112
OFR-MAXI-3/4"	96	80	66	104	G3/4"	Φ31	M5	M36*1.5	Φ63	Φ65	252	90	80	15	19	32	22	60	71	3	52	123
OFR-MAXI-1	116	91	66	104	G1"	Φ31		M36*1.5			252	90	80	15	19	40	22	60	71	3	52	123

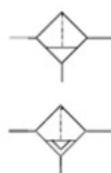
O Series Air Treatment Units

Ordering Code

OF Series Filter

AOF	-	1/4		MINI	-	
Filter		Port Size: G1/8" G1/2" G1/4" G3/4" G3/8" G1"	Precision Blank: 40µm 5M: 5µm	MINI: Body width 40mm MIDI: Body width 55mm MAXI: Body width 66mm		Condensate Drain Blank: Turned Manually S: Semi-automatic A: Fully automatic

Specifications



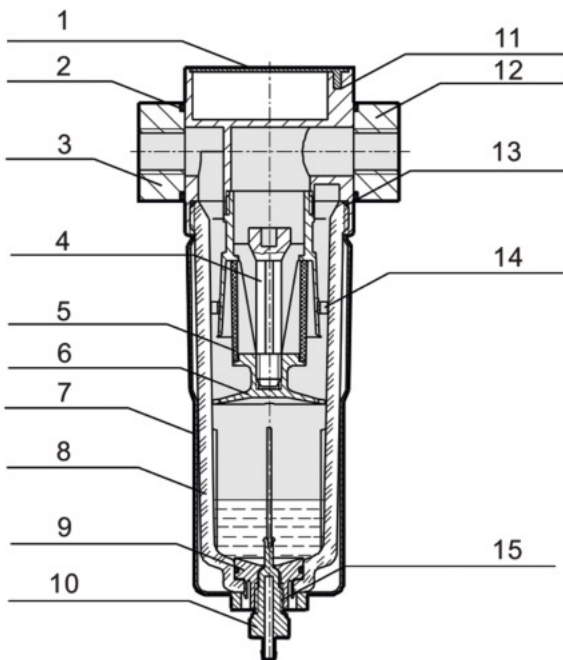
Specifications	MINI			MIDI			MAXI	
Port Size	G1/8"	G1/4"	G3/8"	G3/8"	G1/2"	G3/4"	G3/4"	G1"
Working Medium	Clean air							
Precision	40µm/ 5µm							
Materials Information	Housing : Zinc die-casting ; Filter bowl and oil : PC ; Metal bowl guard : Aluminium alloy ; Sealing : NBR ; Adjusting knob : POM							
Medium Temperature	0~60°C							
Ambient Temperature	0~60°C							
Mounting Type	Pipe mounting or foot mounting							
Assembly Position	Vertical ±5°							
Features of Structure	Sintered filter with water separator							
Max. Condensate Capacity	22ml			43ml			80ml	
Primary Pressure	Turned manual			0- 1.6Mpa				
	Fully automatic			0.15- 1.2Mpa				
Weight	250g			700g			1340g	1440g

O Series Air Treatment Units

Standard Rated Flow

Joint Size		G1/ 8"	G1/ 4"	G3/ 8"	G3/ 8"	G1/ 2"	G3/ 4"	G3/ 4"	G1"
MINI	AOF-...(- A)	1000	1200	1400	-	-	-	-	-
	AOF-...- 5M-...(- A)	800	950	1100	-	-	-	-	-
MIDI	AOF-...(- A)	-	-	-	2700	3000	3000	-	-
	AOFR-...- D- 7-...	-	-	-	1800	2000	2000	-	-
MAXI	AOF-...(- A)	-	-	-	-	-	-	5000	5300
	AOF-...- 5M-...(- A)	-	-	-	-	-	-	3600	3800

Internal Structure

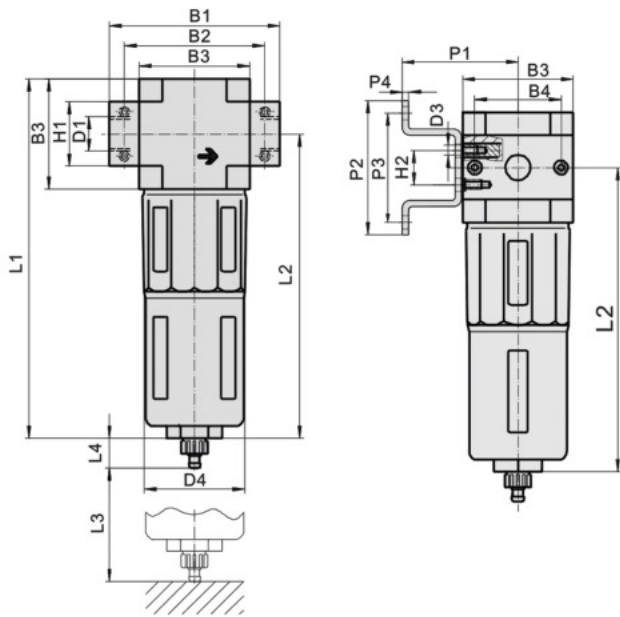


NO.	Item	Material
1.	Ornament cover	POM
2.	O- ring	NBR
3.	Flange- IN	Zinc alloy
4.	Filter element base	POM
5.	Filter element	PE
6.	Manger	POM
7.	Metal bowl guard	Aluminium alloy
8.	Filter bowl	PC
9.	O- ring	NBR
10.	Condensate drain	POM
11.	OF Body	Zinc alloy
12.	Flange- OUT	Zinc alloy
13.	O- ring	NBR
14.	Whirlwind impeller	POM
15.	Inner joint	POM

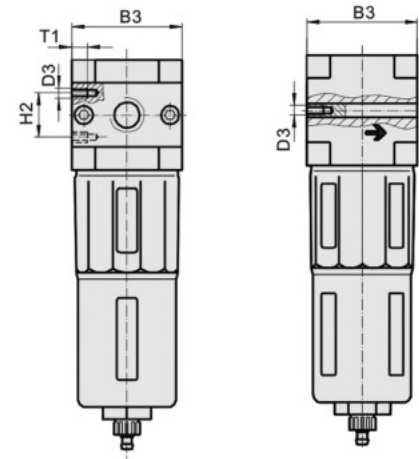
O Series Air Treatment Units

Main Dimensions

With connecting plate



Without connecting plate



Model	B1	B2	B3	B4	D1	D3	D4	H1	H2	L1	L2	L3	L4	L5	P1	P2	P3	P4	T1
AOF- MINI- 1/ 8"	64	52	40	30	G1/8"	M4	38	20	11	144	124	60	15	19	39	43	35	2	7
AOF- MINI- 1/ 4"	64	52	40	30	G1/4"	M4	38	20	11	144	124	60	15	19	39	43	35	2	7
AOF- MINI- 3/ 8"	70	52	40	30	G3/8"	M4	38	20	11	144	124	60	15	19	39	43	35	2	7
AOF- MIDI- 3/ 8"	85	70	55	43	G3/8"	M5	52	32	22	179	151	80	15	19	47	70	60	3	8
AOF- MIDI- 1/ 2"	85	70	55	43	G1/2"	M5	52	32	22	179	151	80	15	19	47	70	60	3	8
AOF- MIDI- 3/ 4"	85	70	55	43	G3/4"	M5	52	32	22	179	151	80	15	19	47	70	60	3	8
AOF- MAXI- 3/ 4"	96	80	66	46	G3/4"	M5	65	32	22	203	170	90	15	19	53	70	60	3	8
AOF- MAXI- 1"	116	91	66	46	G1"	M5	65	40	22	203	170	90	15	19	53	70	60	3	8

O Series Air Treatment Units

Ordering Code

OL Series Lubricator

AOL	-	1/4	-	MINI
Lubricator		Port Size:		MINI: Body width 40mm MIDI: Body width 55mm MAXI: Body width 66mm
		G1/8" G1/2"		
		G1/4" G3/4"		
		G3/8" G1"		



Specifications

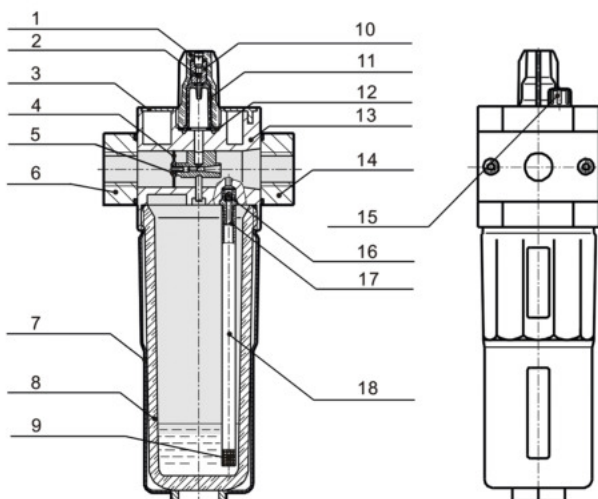
Specifications	MINI			MIDI			MAXI	
	G1/8"	G1/4"	G3/8"	G3/8"	G1/2"	G3/4"	G3/4"	G1"
Port Size	G1/8"	G1/4"	G3/8"	G3/8"	G1/2"	G3/4"	G3/4"	G1"
Working Medium	Clean air							
Max. Working Pressure	1.6MPa							
Min. Standard Nominal Flow Rate	3L/ min			6L/ min			10L/ min	
Max. Condensate Capacity	22ml			43ml			80ml	
Max. Capacity of Oil cup	45ml			110ml			190ml	
Mounting Type	Pipe mounting or foot mounting							
Medium Temperature	- 10~60°C							
Ambient Temperature	- 10~60°C							
Assembly Position	Vertical ±5°							
Materials	Housing : Zinc die- casting ; Filter bowl and oil : PC ; Metal bowl guard : Aluminium alloy ; Sealing : NBR Adjusting knob : POM							
Recommended oil	Turbine No1 Oil ISOVG32							
Features of Structure	The direct constant- density lubricator							
Weight	270g			630g			1100g	1200g

O Series Air Treatment Units

Standard Rated Flow

Joint Size	G1/ 8"	G1/ 4"	G3/ 8"	G3/ 8"	G1/ 2"	G3/ 4"	G3/ 4"	G1"
MINI	1300	2300	2700	-	-	-	-	-
MIDI	-	-	-	5500	6100	6300	-	-
MAXI	-	-	-	-	-	-	8400	9000

Internal Structure

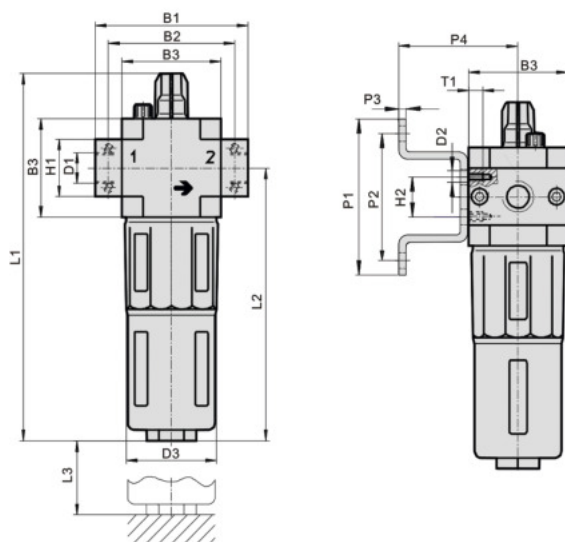


NO.	Item	Material
1.	Upper glass	PS
2.	Adjust screw	Brass
3.	Ornament cover	PO
4.	Windshield chip	NBR
5.	Windshield base	Brass
6.	Flange- IN	Zinc alloy
7.	Metal bowl guard	Aluminium
8.	Lubricator bowl	PC
9.	Oil- filter plug	Brass powder sintered
10.	Screw base	Brass
11.	Oil dropping	PC
12.	Seal piece	NBR
13.	OL Body	Zinc alloy
14.	Flange- OUT	Zinc alloy
15.	Bleeder screw	POM
16.	Steel ball	SUS304
17.	Connection	POM
18.	Oil tube	PU
-	O- ring	NBR

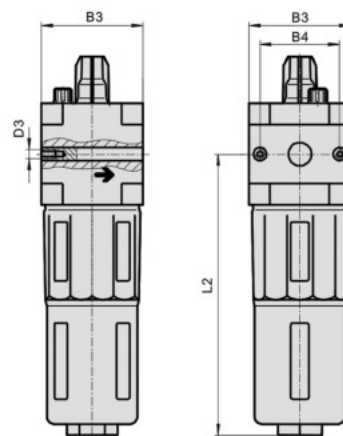
O Series Air Treatment Units

Main Dimensions

With connecting plate



Without connecting plate




Model	B1	B2	B3	B4	D1	D2	D3	H1	H2	L1	L2	L3	P1	P2	P3	P4	T1
AOL- MINI- 1/8"	64	52	40	30	G1/8"	M4	Ø38	20	11	169	124	100	44	35	2	39	7
AOL- MINI- 1/4"	64	52	40	30	G1/4"	M4	Ø38	20	11	169	124	100	44	35	2	39	7
AOL- MINI- 3/8"	70	52	40	30	G3/8"	M4	Ø38	20	11	169	124	100	44	35	2	39	7
AOL- MIDI- 3/8"	85	70	55	43	G3/8"	M5	Ø52	32	22	204	151	120	71	60	3	47	8
AOL- MIDI- 1/2"	85	70	55	43	G1/2"	M5	Ø52	32	22	204	151	120	71	60	3	47	8
AOL- MIDI- 3/4"	85	70	55	43	G3/4"	M5	Ø52	32	22	204	151	120	71	60	3	47	8
AOL- MAXI- 3/4"	96	80	66	46	G3/4"	M5	Ø65	32	22	228	170	150	71	60	3	53	8
AOL- MAXI- 1"	116	91	66	46	G1"	M5	Ø65	40	22	228	170	150	71	60	3	53	8

O Series Air Treatment Units

Ordering Code

OR Series Regulator

AOR	-	1/4	-		-	MINI
Regulator		Port Size:		Blank: 0.5- 12bar 7: 0.5- 7bar		MINI: Body width 40mm MIDI: Body width 55mm MAXI: Body width 66mm
		G1/8" G1/2"				
		G1/4" G3/4"				
		G3/8" G1"				



Specifications

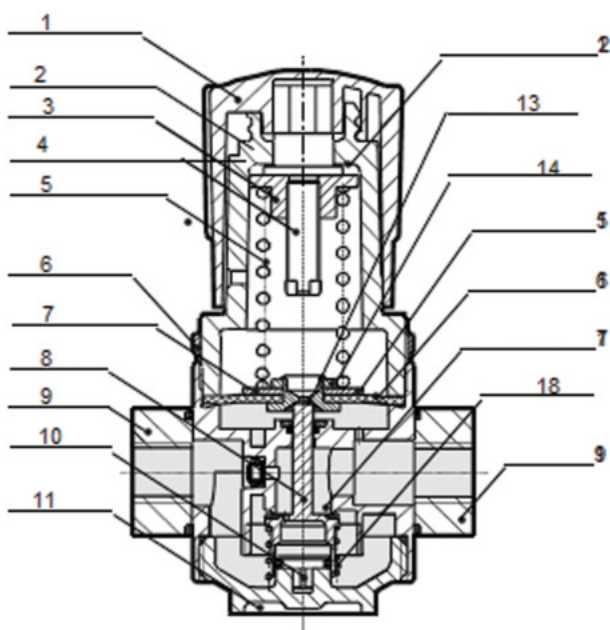
Specifications		MINI			MIDI			MAXI	
Port Size		G1/8"	G1/4"	G3/8"	G3/8"	G1/2"	G3/4"	G3/4"	G1"
Working Medium		Compressed air							
Features of Structure		Sintered filter with water separator; MINI/ MIDI: Diaphragm type regulator; MAXI: Piston regulator; Direct constant- density lubricator.							
Mounting Type		Pipe mounting or foot mounting							
Assembly Position		Any							
Primary Pressure		0.1~1.6MPa							
Working Pressure		0.05~1.2MPa/ 0.05~0.7MPa							
Working Temperature Range		0~60°C							
Materials Information		Housing: Zinc die- casting; Filter bowl and oil: PC; Metal bowl guard: Aluminium alloy; Sealing: NBR; Adjusting knob: POM							
Adjustment Range		0.05~0.7MPa							
		0.05~1.2MPa							
Weight	With pressure gauge	350g			720g			1200g	
	Without pressure gauge	300g			660g			1100g	

O Series Air Treatment Units

Standard Rated Flow

Joint Size		G1/ 8"	G1/ 4"	G3/ 8"	G3/ 8"	G1/ 2"	G3/ 4"	G3/ 4"	G1"
MINI	AOR...(0.05~0.7MPa)	1000	1600	1800	-	-	-	-	-
	AOR...(0.05~1.2MPa)	800	1500	1700	-	-	-	-	-
MIDI	AOR...(0.05~0.7MPa)	-	-	-	3300	4000	4500	-	-
	AOR...(0.05~1.2MPa)	-	-	-	3200	3500	3500	-	-
MAXI	AOR...(0.05~0.7MPa)	-	-	-	-	-	-	12000	12500
	AOR...(0.05~1.2MPa)	-	-	-	-	-	-	11000	11500

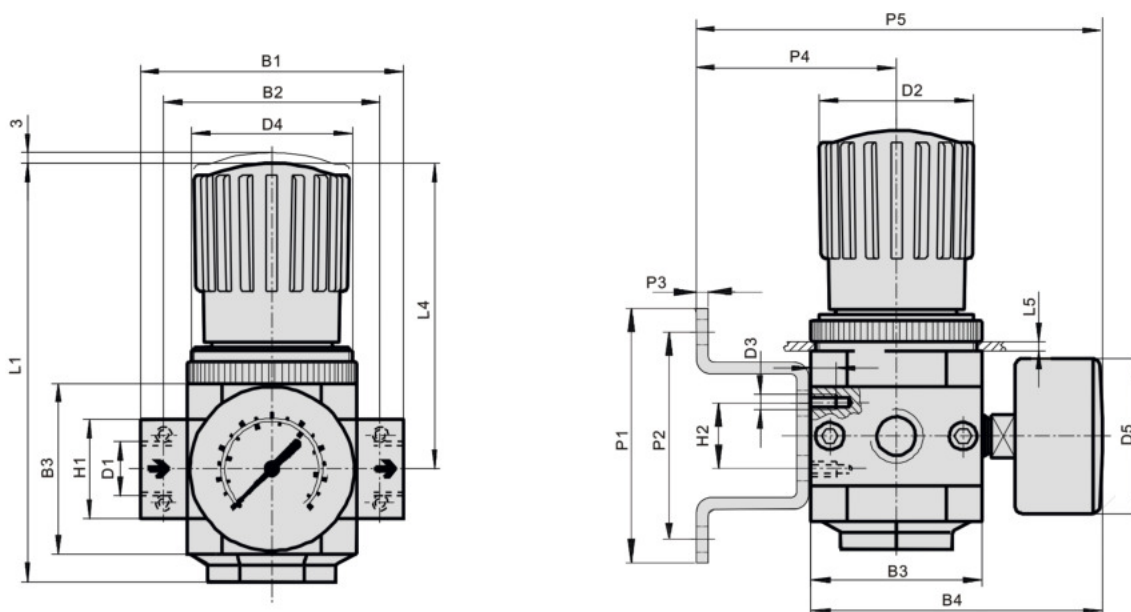
Internal Structure



NO.	Item	Material
1.	Pressure knob	POM
2.	Regulator cap	POM
3.	Regulator nut	S35C
4.	Adjusting spindle	S35C
5.	Pressure spring	SWC
6.	Fixed ring	6061- T6
7.	One part of membrane	PA6+G15
8.	Flange- IN	Zinc alloy
9.	Spool	Brass
10.	Fasteners	Brass
11.	Locker cover	Zinc alloy
12.	Wearing sheet	Insulation sheet
13.	Sheet	NBR
14.	Overflow base	6061- T6
15.	One part of diaphragm	SPCC
16.	Diaphragm	NBR+Nylon
17.	OR Body	Zinc alloy
18.	Flange- OUT	Zinc alloy
19.	Spring	SWPB
	O- ring	NBR

O Series Air Treatment Units

Main Dimensions



Model	B1	B2	B3	B4	D1			D4	D5	H1	L1	L4	L5	L6	L7	T1	P1	P2	P3	P4	P5
AOR- MINI- 1/8"	64	52	40	76	G1/8	31	M4	M36* 1.5	Ø41	20	96	11	3	98	60	7	43	35	2	39	95
AOR- MINI- 1/4"	64	52	40	76	G1/4	31		M36* 1.5	Ø41		96	11	3	98	60	7	43	35	2	39	95
AOR- MINI- 3/8"	70	52	40	76	G3/8	31	M4	M36* 1.5	Ø41	20	96	11	3	98	60	7	43	35	2	39	95
AOR- MIDI- 3/8"	85	70	55	95	G3/8	50	M5	M52* 1.5	Ø50	32				130	60	8	70	60	3	47	112
AOR- MIDI- 1/2"	85	70	55	95	G1/2	50	M5	M52* 1.5	Ø50	32	135	22	5	130	60	8	70	60	3	47	112
AOR- MIDI- 3/4"	85	70	55	95	G3/4	50	M5	M52* 1.5	Ø50	32				130	60	8	70	60	3	47	112
AOR- MAXI- 3/4"	96	80	66	107	G3/4	31	M5	M36* 1.5	Ø50	32	125	22	4	111	60	8	70	60	3	53	124
AOR- MAXI- 1"	116	91	66	107	G1	31	M5	M36* 1.5	Ø50	32				111	60	8	70	60	3	53	124

A Series Air Treatment Units

Ordering Code

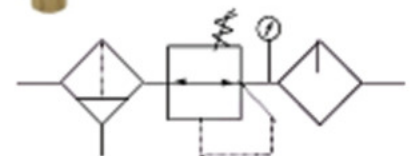
FC Series FR.L. Combination

AFC	30	-	10	-	03	-	<input type="checkbox"/>
Filter Regulator +Lubricator	10:1000 Body Size 20:2000 Body Size 30:3000 Body Size 40:4000 Body Size 50:5000 Body Size		00: Two Elements (Filter Regulator +Lubricator)		M5:M5 03:3/8" 01:1/8" 04:1/2" 02:1/4" 06:3/4" 10:1		Blank: Manual Drain Type D: Auto Drain Type (Available Only For 2000 or Above)



Specifications

Guaranteed pressure resistance	1.5MPa
Max. working pressure	1.0MPa
Working temperature	5~60°C
Filter precision	25 μm (5 μm is optional)
Recommended oil	Turbine No1 Oil ISOVG32
Bowl material	Polycarbonate
Bowl guard	AC1010~2010 (None) AC3010~5010 (Available)
Pressure adjusting range	AC1010: 0.05~0.7MPa AC2010~5010: 0.05~0.85MPa
Valve type	With overflow



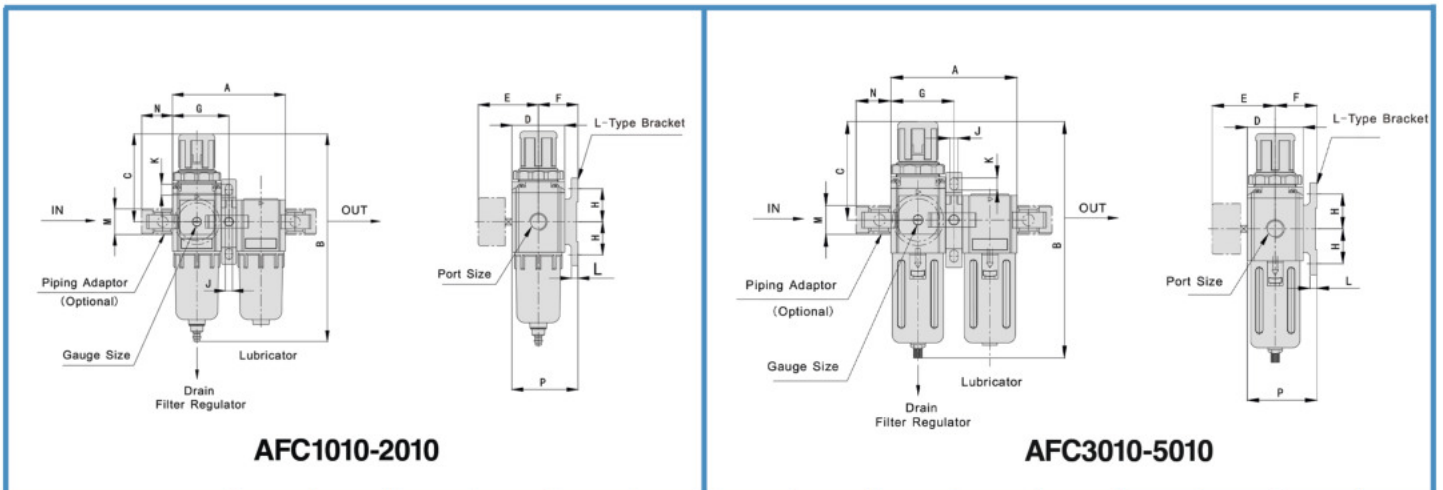
Note: NPT, PT Port size is optional

A Series Air Treatment Units

Model	Specifications					Accessories		
	Assembly		Rated flow (L/min)	Port size (G)	Pressure gauge thread size(G)	Weight (Kg)	Bracket (2 Pcs)	Pressure Gauge
	Filter Regulator	Lubricator						
AFC1010-M5	AW1000	AL1000	90	M5	1/16	0.22	Y10T	G27-10-R1
AFC2010-01	AW2000	AL2000	500	G1/8"	1/8	0.66	Y20T	G36-10-01
AFC2010-02				G1/4"				
AFC3010-02	AW3000	AL3000	1700	G1/4"	1/8	0.98	Y30T	
AFC3010-03				G3/8"				
AFC4010-03	AW4000	AL4000	3000	G3/8"	1/4	1.93	Y40T	G46-10-02
AFC4010-04				G1/2"				
AFC4010-06	AW4000-06	AL4000-06	3000	G3/4"	1/4	1.99	Y50T	
AFC5010-06	AW5000	AL5000	4000	G3/4"	1/4	3.20	Y60T	
AFC5010-10				G1"				

Note: The above information is based on 0.7Mpa (7.1kgf/cm²) supplied pressure and 0.5Mpa(5.1kgf/cm²) setted pressure

Main Dimensions



Model	Port Size	A	B	C	D	E	F	G	H	G	K	L	M	N	P
AFC1010	M5	58	109.5	50.5	25	26	25	29	20	4.5	7.5	5	17.5	16	38.5
AFC2010	1/8~1/4	90	164.5	78	40	56.8	30	45	24	5.5	8.5	5	22	23	50
AFC3010	1/4~3/8	117	211	92.5	53	60.8	41	58.5	35	7	11	7	34.2	26	70.5
AFC4010	3/8~1/2	154	262	112	70	70.5	50	77	40	9	13	7	42.2	33	88
AFC4010-06	3/4	164	267	114	70	70.5	50	82	40	9	13	7	46.2	36	88
AFC5010	3/4~1	195	338	116	90	70.5	69.8	97.5	50	12	16	10.5	55.2	40	115

FR Series F.R. Combination

Ordering Code

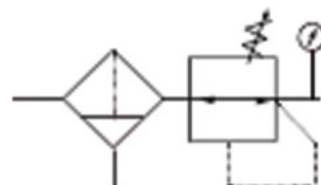
FR Series F.R. Combination

AFR	30	00	-	03	-	<input type="checkbox"/>
F.R Combination	10:1000 Body Size 20:2000 Body Size 30:3000 Body Size 40:4000 Body Size 50:5000 Body Size			M5:M5 01:1/8" 02:1/4" 03:3/8" 04:1/2" 06:3/4" 10:1"		Blank: Manual Drain Type D: Auto Drain Type (Available Only For 2000 or Above)



Specifications

Guaranteed pressure resistance	1.5MPa
Max. working pressure	1.0MPa
Working temperature	5~60°C
Filter precision	25µm
Bowl material	Polycarbonate
Bowl guard	AW1000~2000(None) AW3000~5000(Available)
Pressure adjusting range	AW1000: 0.05~0.7 Mpa (0.5~0.7kgf/cm2) AW2000~5000: 0.05~0.85 Mpa (0.5~8.5kgf/cm2)
Valve type	With overflow



Note: NPT, PT Port size is optional

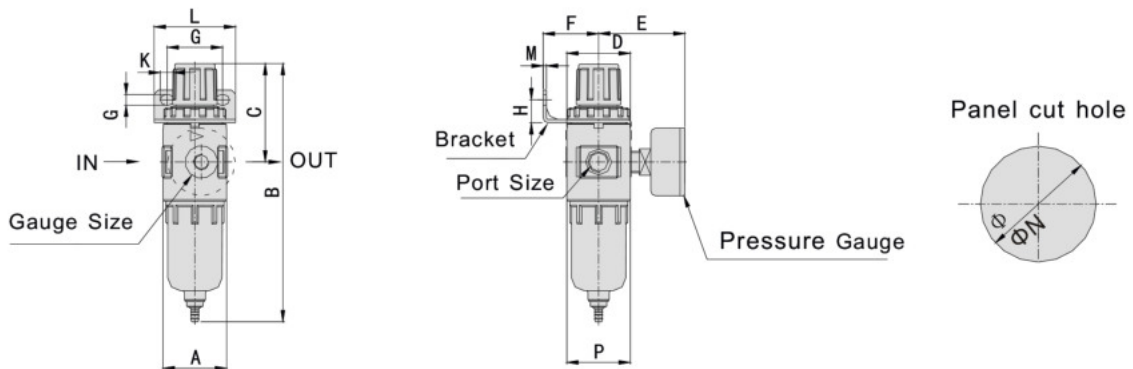
FR Series F.R. Combination

Model	Specifications					Drain function	Auto drain model
	Rated flow (L/min)	Port size (G)	Pressure gauge thread size (G)	Weight (Kg)	Bracket		
AFR1000-M5	100	M5	G1/16	0.09	B120	Manual drain	-
AFR2000-01	550	G1/8"	G1/8	0.36	B220	Manual drain	AW2000-01D
AFR2000-02		G1/4"					AW2000-02D
AFR3000-02	2000	G1/4"	G1/8	0.56	B320	A. Zero pressure drain B. Manual drain	AW3000-02D
AFR3000-03		G3/8"					AW3000-03D
AFR4000-03	4000	G3/8"	G1/4	1.15	B420		AW4000-03D
AFR4000-04		G1/2"					AW4000-04D
AFR4000-06	4500	G3/4"	G1/4	1.21	B420		AW4000-06D
AFR5000-06	5500	G3/4"	G1/4	1.70	B420		AW5000-06D
AFR5000-10		G1"				AW5000-10D	

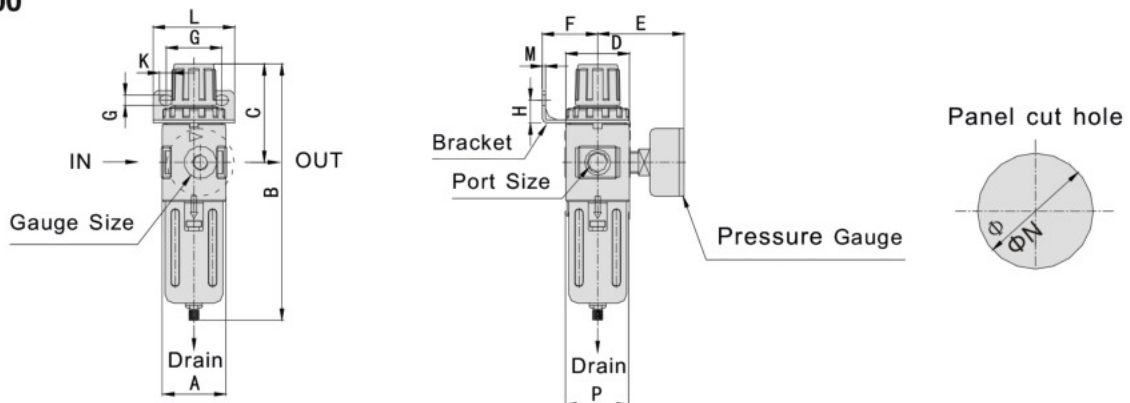
Note: The above information is based on 0.7Mpa (7.1kgf/cm²) supplied pressure and 0.5Mpa (5.1kgf/cm²) setted pressure

Main Dimensions

AFR1000-2000

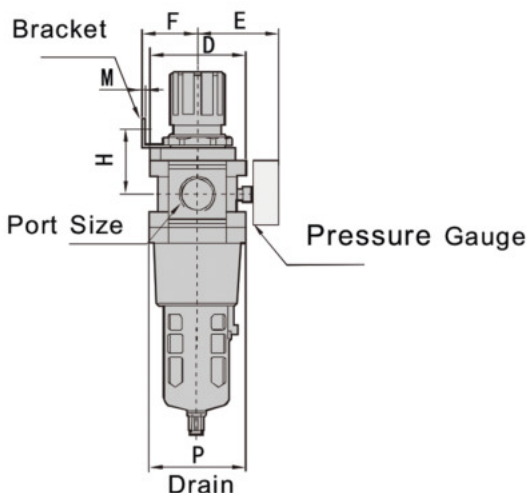
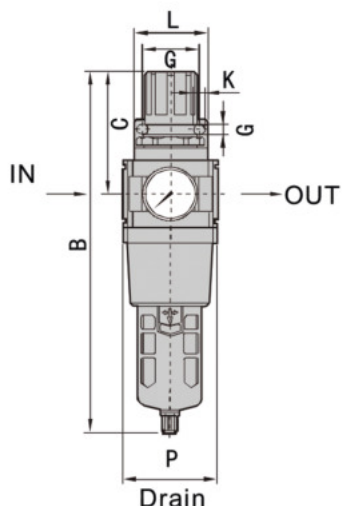


AFR 3000-4000

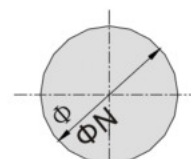


FR Series F.R. Combination

AFR 5000



Panel cut hole



Model	Port Size	A	B	C	D	F	G	H	J	K	L	M	N	P
AFR1000-M5	M5	25	109.5	50.5	25	25	28	30	4.5	6.5	40	2	20.5	28
AFR2000-01	1/8"	40	164.5	78	40	30	34	43.5	5.4	15.4	55	2.3	33.5	40
AFR2000-02	1/4"	40	164.5	78	40	30	34	43.5	5.4	15.4	55	2.3	33.5	40
AFR3000-02	1/4"	53	211	92.5	53	39	40	46	6.5	8	53	2.3	42.5	56
AFR3000-03	3/8"	53	211	92.5	53	39	40	46	6.5	8	53	2.3	42.5	56
AFR4000-03	3/8"	70	262	112	70	49.2	54	53.5	8.5	10.5	70	2.3	52.5	73
AFR4000-04	1/2"	75	267	114	70	49.2	54	53.5	8.5	10.5	70	2.3	52.5	73
AFR4000-06	3/4"	70	262	112	70	49.2	54	53.5	8.5	10.5	70	2.3	52.5	73
AFR5000-06	3/4"	90	338	116	90	49.2	54	62	8.5	10.5	70	2.3	52.5	90
AFR5000-10	1"	90	338	116	90	49.2	54	62	8.5	10.5	70	2.3	52.5	90

Note: The above information is based on 0.7 Mpa (7.1kgf/cm²) supplied pressure and 0.5 Mpa (5.1kgf/cm²) setted pressure

A Series Air Treatment Units

Ordering Code

AR Series Regulator

AR	30	00	-	03
Regulator	10:1000 Body Size 20:2000 Body Size 30:3000 Body Size 40:4000 Body Size 50:5000 Body Size			M5:M5 01:1/8" 02:1/4" 03:3/8" 04:1/2" 06:3/4" 10:1"



Specifications

Guaranteed pressure resistance	1.5MPa
Max. working pressure	1.0MPa
Working temperature	5~60°C
Pressure adjusting range	0.05~0.85MPa
Valve type	With overflow

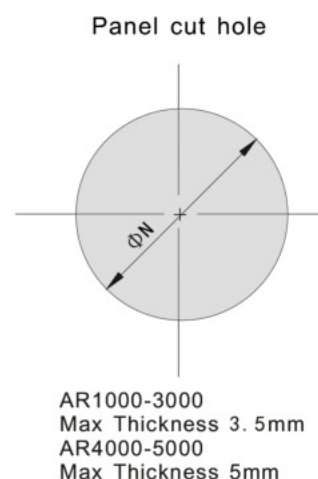
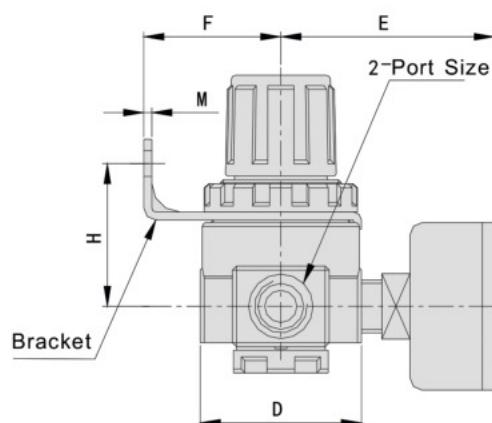
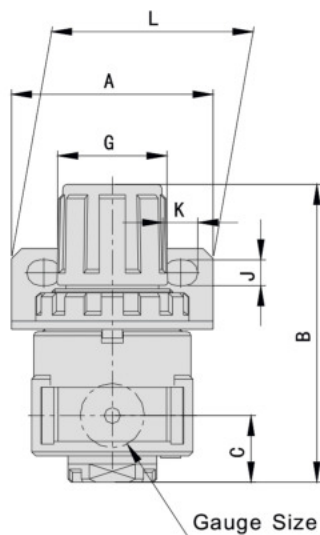


Model	Specifications				Accessories
	Rated flow (L/min)	Port size (G)	Pressure gauge thread size (G)	Weight (Kg)	Bracket
AR1000-M5	100	M5	G1/16"	0.08	B120
AR2000-01	550	G1/8"	G1/8"	0.27	B220
AR2000-02		G1/4"			
AR2500-02	2000	G1/4"	G1/8"	0.27	B220
AR2500-03		G3/8"			
AR3000-02	2500	G1/4"	G1/8"	0.41	B320
AR3000-03		G3/8"			
AR4000-03	6000	G3/8"	G1/4"	0.84	B420
AR4000-04		G1/2"			
AR4000-06		G3/4"	G1/4"		
AR5000-06	8000	G3/4"	G1/4"	1.19	
AR5000-10		G1"			

Note: The above information is based on 0.7 Mpa (7.1kgf/cm²) supplied pressure 0.5Mpa (5.1kgf/cm²) setted pressure

A Series Air Treatment Units



Main Dimensions



Model	Port Size	A	B	C	D	E	G	H	J	K	L	M	N
AR1000-M5	M5	25	61.5	11	25	26	28	30	4.5	6.5	40	2	20.5
AR2000-01	1/8"	40	95	17	40	56.8	34	44	5.4	15.4	55	2.3	33.5
AR2000-02	1/4"	40	95	17	40	56.8	34	44	5.4	15.4	55	2.3	33.5
AR2500-02	1/4"	53	102.5	25	48	60.8	34	44	5.4	15.4	55	2.3	33.5
AR2500-03	3/8"	53	102.5	25	48	60.8	34	44	5.4	15.4	55	2.3	33.5
AR3000-02	1/4"	53	127.5	35	53	60.8	40	46	6.5	8	53	2.3	42.5
AR3000-03	3/8"	53	127.5	35	53	60.8	40	46	6.5	8	53	2.3	42.5
AR4000-03	3/8"	75	154	40.5	70	69.5	54	55.5	8.5	10.5	70	2.3	52.5
AR4000-04	1/2"	70	149.5	37.5	70	65.5	54	54	8.5	10.5	70	2.3	52.5
AR4000-06	3/4"	75	154	40.5	70	69.5	54	55.5	8.5	10.5	70	2.3	52.5
AR5000-06	3/4"	90	168	48	90	75.5	54	62	8.5	10.5	70	2.3	52.5
AR5000-10	1"	90	168	48	90	75.5	54	62	8.5	10.5	70	2.3	52.5

Note: The above information is based on 0.7 Mpa (7.1kgf/cm²) supplied pressure and 0.5 Mpa (5.1kgf/cm²) setted pressure

Pressure Gauge

Photo	Description of goods	Mode	Thread
	Steel shell, plastic lens, bottom connection	APG801-01	1/8
	Steel shell, plastic lens, back connection	APG801-02	1/4
	Steel shell, plastic lens, back connection	APG803-01	1/8
	Steel shell, plastic lens, bottom connection	APG803-02	1/4