

5

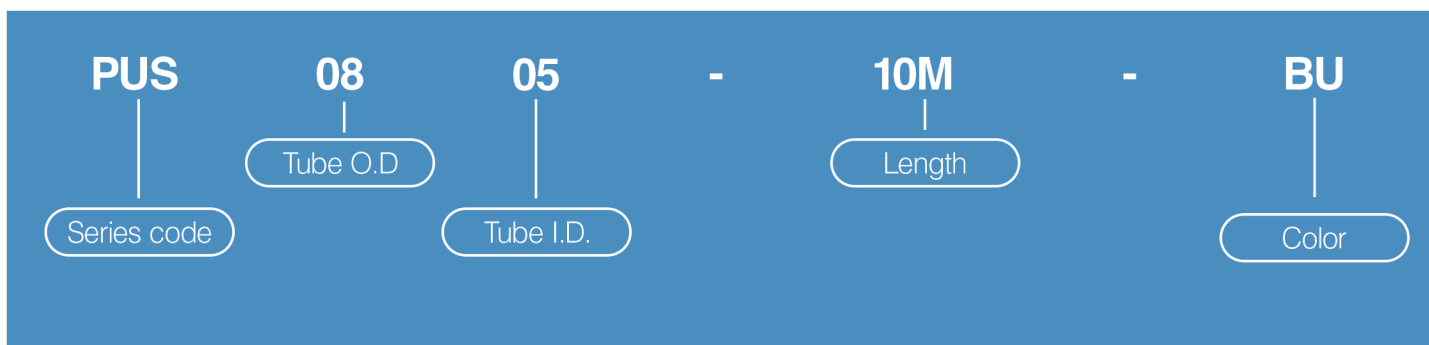
AIR HOSES,  
QUICK COUPLERS,  
AIR GUNS



# PU Spiral Tube (Polyester Polyurethane)

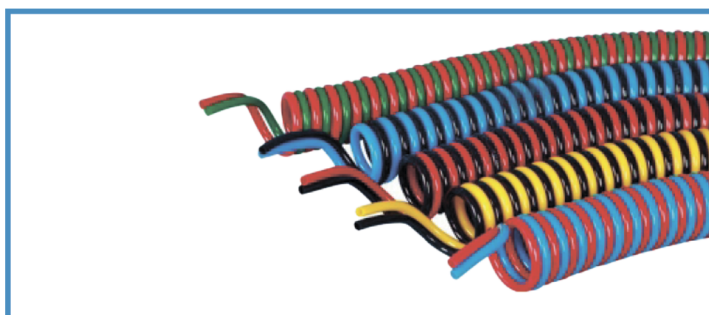
Ordering Code

PUS Tube



## Features:

The ester-based PU coiling tube, possess all the characteristics of common PU tube, more featuring with excellent flexibility and excelling in restoring force. Easy using and flexible for movable parts.



Tube Color

Code	C	B	BU	R	Y	G	W	O
Graphic	Clear	Black	Blue	Red	Yellow	Green	White	Orange

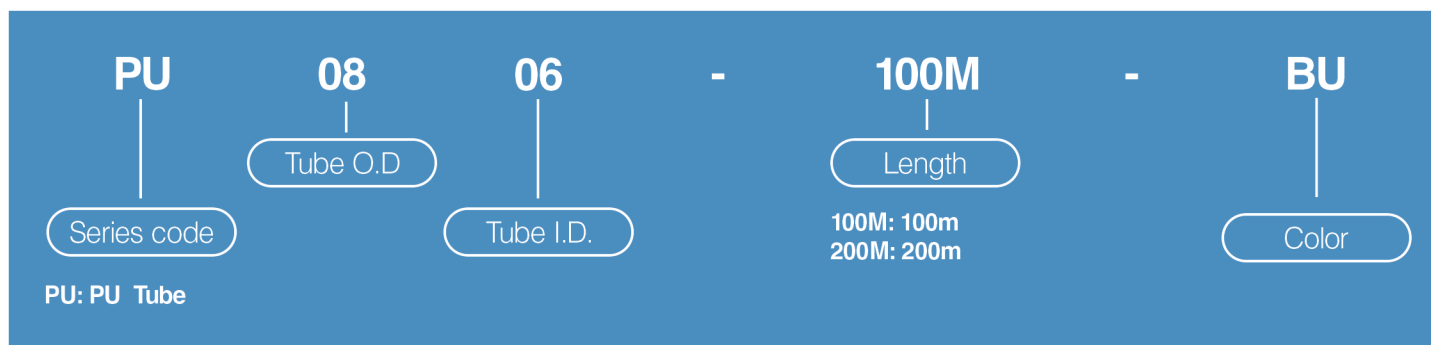
## Specifications

Material	Polyester Polyurethane
Hardness	95A-98A
Fluid	Air, water (other fluids)
Environment and fluid temperature	-20°C~80°C

# PU Tube (Polyester Polyurethane)

Ordering Code

PU Tube



## Features:

The ester- based PU tube, featuring excellent pressure resistance, weather resistance, corrosion resistance and flexibility, used for the piping of air concerned system.

## Application:

Industrial automation, pneumatic tools, tube for water and fluids, vacuum tubes, protective sleeve for metal and electronic products.



Tube Color

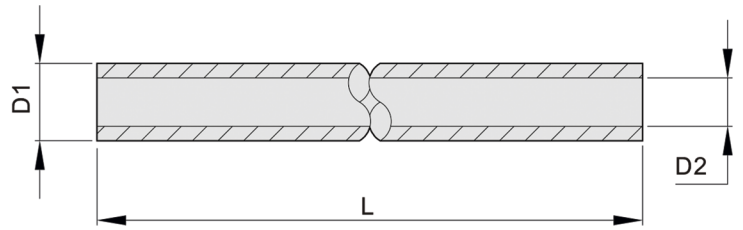
Code	C	B	BU	R	Y	G	W	O
Graphic	Clear	Black	Blue	Red	Yellow	Green	White	Orange

## Specifications

Material	Polyester Polyurethane
Hardness	95A-98A
Fluid	Air, water
Environment and fluid temperature	-20°C~80°C

# PU Tube (Polyester Polyurethane)

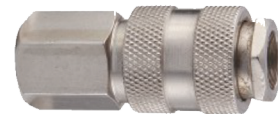
## Main Dimensions



Model	D1 (mm)	D2 (mm)	L (m)	Min.working pressure at 20°C(Bar)	Min.burst pressure at 20°C(Bar)	Min.bend radius at 20°C(mm)	Net weight (Kg/Roll)
PU0425	4	2.5	200	10	30	10	1.9
PU0604	6	4	200	10	30	15	3.9
PU0855	8	5.5	100	8	24	20	3.3
PU0805	8	5	100	10	30	20	3.8
PU1065	10	6.5	100	10	30	30	5.6
PU1208	12	8	100	10	30	35	7.8
PU1410	14	10	100	8	24	55	9.4
PU1612	16	12	100	8	24	65	11

# Quick Coupler

Model	Size	
E02-2SH	Ø 6.35	SH
E02-3SH	Ø 8	
E02-4SH	Ø 10	
E02-2SF	1/4" BSPT	SF
E02-3SF	3/8" BSPT	
E02-4SF	1/2" BSPT	
E02-2SM	1/4" BSPT	SM
E02-3SM	3/8" BSPT	
E02-4SM	1/2" BSPT	
E02-2PM	1/4" BSPT	PM
E02-3PM	3/8" BSPT	
E02-4PM	1/2" BSPT	
E02-2PH	Ø 6	PH
E02-3PH	Ø 8	
E02-4PH	Ø 10	
E02-2PF	1/4" BSPT	PF
E02-3PF	3/8" BSPT	
E02-4PF	1/2" BSPT	
E02-2SN	Ø 5x8	SN
E02-3SN	Ø 6.5x10	
E02-4SN	Ø 8x12	
E02-2PN	Ø 5x8	PN
E02-3PN	Ø 6.5x10	
E02-4PN	Ø 8x12	



# Blowguns

## Tire gun



**STANDART BLOWGUN, LOWER CONNECTION WITH SHORT ANGELED NOZZLE, FEMALE BSPP THREAD**

PAG-01

Female thread

**C**  $\frac{\text{DN}}{\text{---}}$

G1/4 3.5

Technical polymer, nickel-plated brass, treated aluminium, NBR



**STANDART AIRGUN, BOTTOM CONNECTION WITH OR WITHOUT SHORT STREIGHT NOZZLE, FEMALE BSPP THREAD**

MAG-02

Coupler connection

**C**  $\frac{\text{DN}}{\text{---}}$

G1/4 3

Nickel-plated brass, NBR



**NICKEL-PLATED BRASS NBR**

TG-06

**C**  $\frac{\text{DN}}{\text{---}}$

G1/4 3